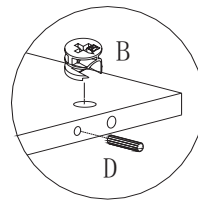
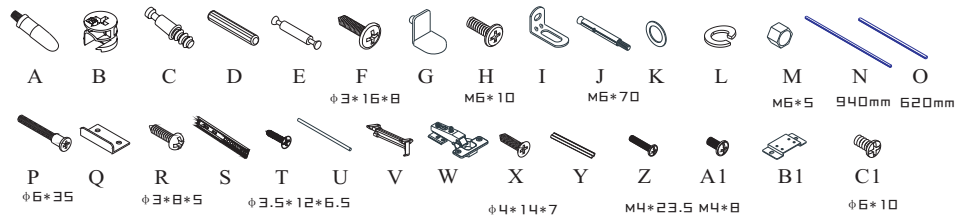
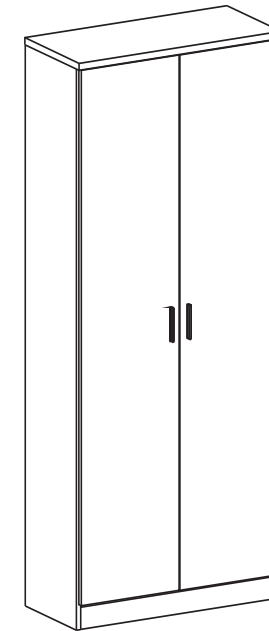
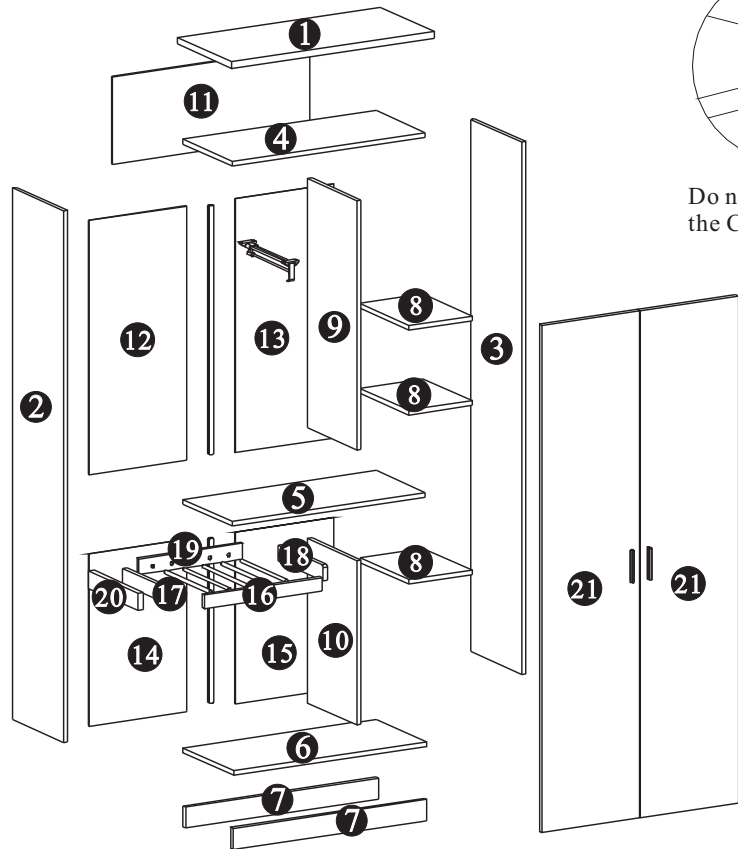


DZ-SK09-QU

854*396*2265H



Do not put the Dowels in the Cam Screw holes!



ASSEMBLY INSTRUCTION

Packing cartons: A+B (2 cartonS)

Letter is stand for hardware, Number is stand for panel part

Step 1: put hardware B, C, D,E into the corresponding hole and then apply little A to D

Step 2: Connect part 7 with part 6,

Connect part 5 with part9,10

Connect part 4 with part9

Connect part 2,3, with part4,5,6,7,9,10,

Connect part11,12,13,14,15, with part2,3

Use hardware P go through hardware 20 to connect part 2

Use hardware C1go through hardware B1 to connect part 2,3

Use hardware Xgo through hardware W to connect part B1

Use hardware A1go through hardware W to connect part 21

Connect part19 with part 17,18

Connect part 16,Uwith part 17,18,19

Use hardware T go through hardware S to connect part 17,18

Use hardware T go through hardware S to connect part 10,20

Use hardware Ginto the hole of part2,3,9,10

Use hardware X go through hardwareV to connect part 4

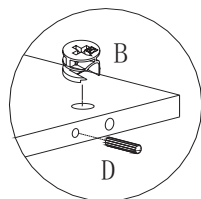
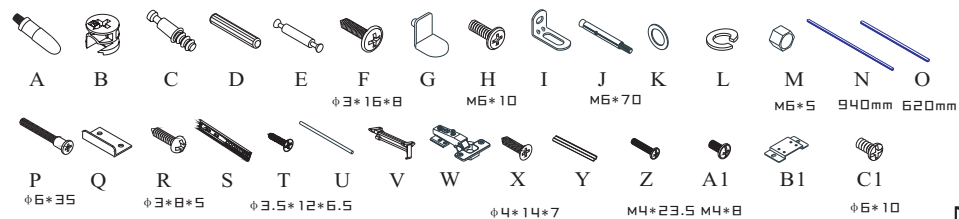
Use hardware Rgo through hardware Q to connect part 4

Use hardware Zgo through hardware 21 to connect part Y

Step 3: put part8into the right position

DZ-SK09-QU

854*396*2265H



Do not put the Dowels in the Cam Screw holes!

